

## Community Engagement for Climate Resilience What is it and how do you do it well?

September 27, 2024

Foley Hoag LLP, Boston

*and*

Streaming on Zoom



**Sustainable  
Solutions Lab**

# WELCOME

## Ann Gisinger

*Forum Organizer*

*President and Executive Director  
Environmental Business Council of New England*

# WELCOME

## Kelly Knee

*Forum Organizer*

*Executive Director*

*RPS – A Tetra Tech Company*

# FORUM CO-CHAIRS

## **Carolyn Norkiewicz**

*Regional Coordinator for Greater Boston, Municipal Vulnerability Program  
Executive Office of Energy and Environmental Affairs, Commonwealth of Massachusetts*

## **John Valinch**

*ESG Analyst  
Boston Trust Walden*

## **Julie Wormser**

*Chief Climate Officer  
City of Cambridge*



OFFICIAL SPONSOR OF VIRTUAL PRESENTATION



# Indrani Ghosh

*Steering Committee Member  
Climate Adaptation Forum*

*Resiliency Practice Leader  
Weston & Sampson*

# WELCOME FROM HOST



**FOLEY  
HOAG** LLP

## **Kathleen Brill**

*Steering Committee Member  
Climate Adaptation Forum*

*Partner  
Foley Hoag LLP*

# PROGRAM INTRODUCTION

**John Valinch**

*Forum Co-Chair*

*ESG Analyst*

*Boston Trust Walden*



# Striving for Authentic Engagement: The Chelsea Model

**Bianca Navarro-Bowman**

*Climate Justice Manager  
GreenRoots*

**Fidel Maltez**

*City Manager  
City of Chelsea*



# Striving for Authentic Engagement: The Chelsea Model

Bianca Bowman, Climate Justice Organizer, GreenRoots  
Fidel Maltez, Chelsea City Manager



# CHELSEA

- 2 square miles
- 40,000+ residents
- 71% + linguistic/ethnic minorities
- 22-24% population below poverty line

# Why do we prioritize community engagement?

## Trust



Health care professionals at a Mass. General vaccination van parked near the La Colaborativa food pantry administered COVID-19 vaccines and tests for residents during a mini-festival for teens in Chelsea, Mass., on Oct. 06. NATHAN KLIMA FOR THE BOSTON GLOBE/THE BOSTON GLOBE

## Effectiveness



# What does it look like in Chelsea?

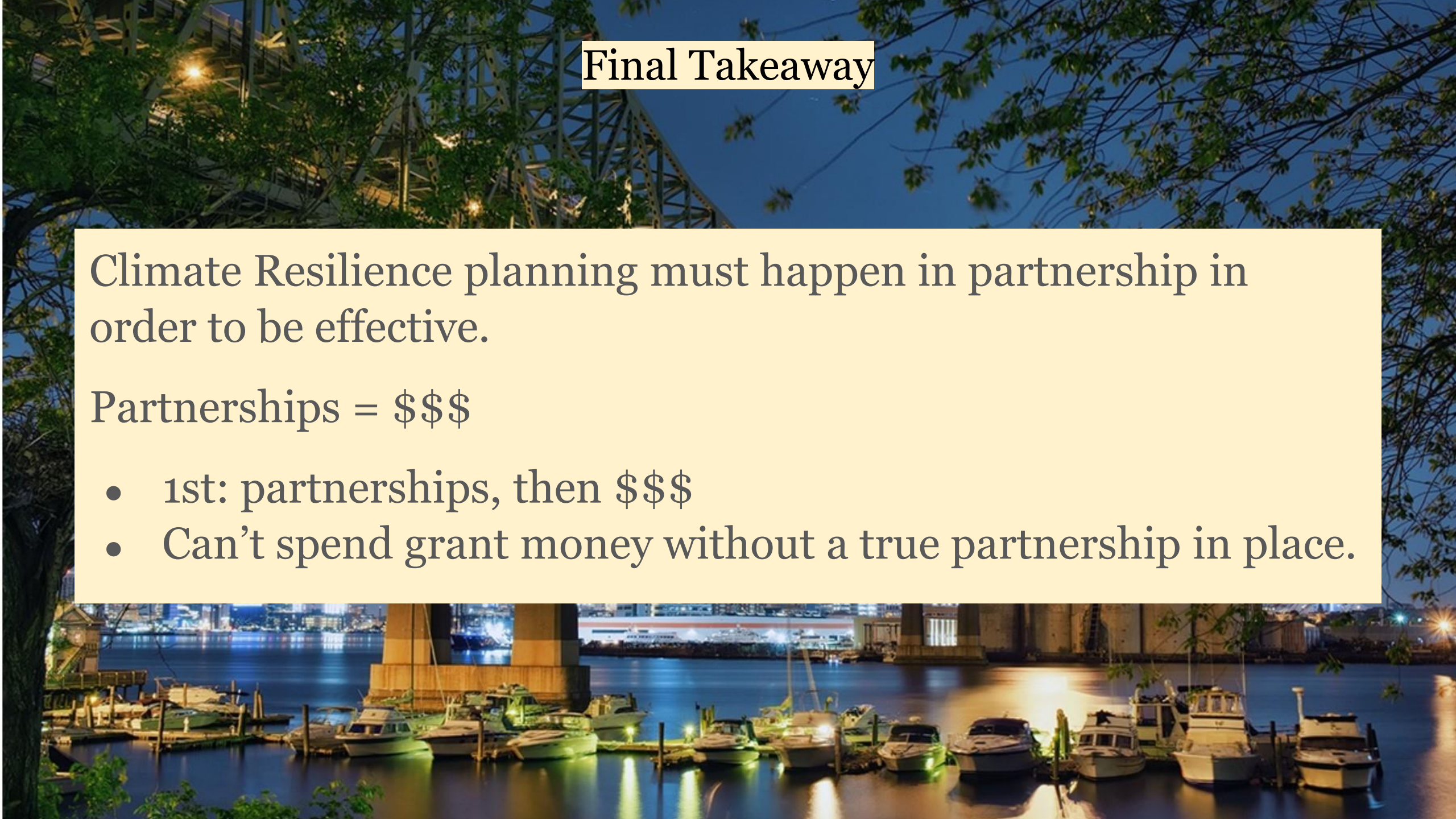


## Final Takeaway

Climate Resilience planning must happen in partnership in order to be effective.

Partnerships = \$\$\$

- 1st: partnerships, then \$\$\$
- Can't spend grant money without a true partnership in place.



# Participatory Budgeting: An Approach to Community-Led Decision Making and Engagement

**Melissa Liu**

*Participatory Budgeting and Engagement Coordinator  
City of Cambridge*



# *City of Cambridge, MA* Participatory Budgeting

An Approach to Community-Led Decision Making  
and Engagement







# What is Participatory Budgeting (PB)?



Participatory Budgeting is a process where community members decide how to spend \$1 million dollars of the city's budget to improve Cambridge.

# What is Participatory Budgeting (PB)?



Participatory Budgeting is a process where community members decide how to spend \$1 million dollars of the city's budget to improve Cambridge.

PB gives real people, real power, over real money.

# What is Participatory Budgeting (PB)?

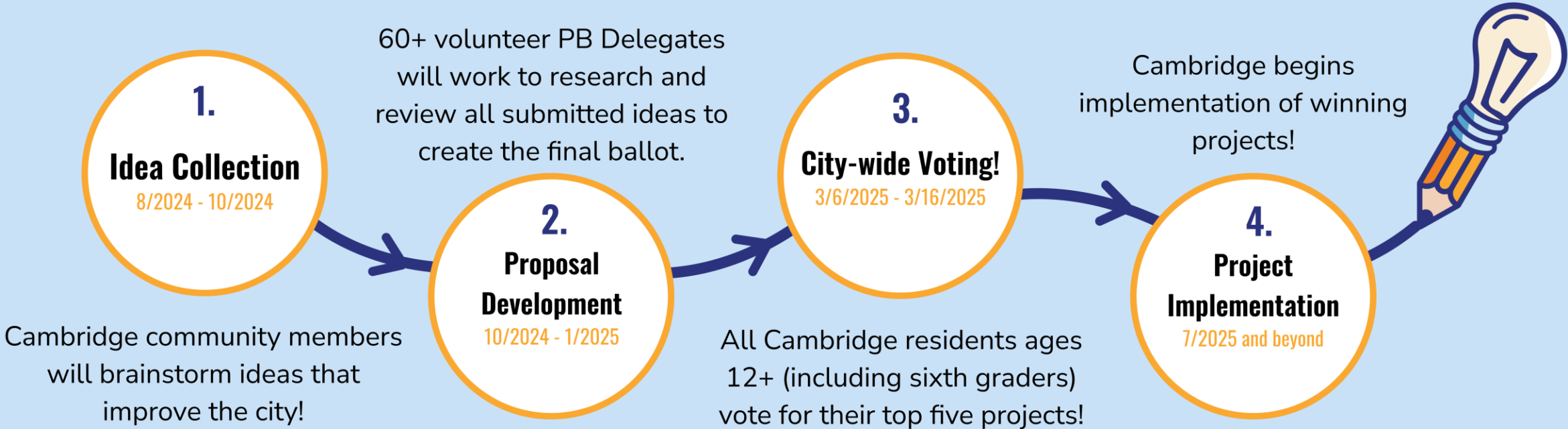


Participatory Budgeting is a process where community members decide how to spend \$1 million dollars of the city's budget to improve Cambridge.

PB gives real people, real power, over real money.

Cambridge residents have set aside nearly \$9.5 million to pay for 72 PB projects since 2014.

# PB11 Timeline





Idea Collection

What is the title of your idea?

### Pickle Ball at Glacken Field



Juliana Davis suggested this Community Resources & Education idea near 600 Huron Avenue, Cambridge, MA.

What is your idea, and how does it improve Cambridge?

I believe it is possible to add extra lines to a tennis court so that it can also be used as a pickle ball court. Would it be possible to do this at some of the courts at Glacken Feild?

[VIEW ON MAP](#)

0 Support This!



What is the title of your idea?

### CPL bike racks



Mark Feeney suggested this Transportation, Streets & Sidewalks idea near 449 Broadway, Cambridge, MA.

What is your idea, and how does it improve Cambridge?

There is often limited space for locking bikes at the library. Adding additions racks/posts would improve things for both library patrons and Rindge students who cycle to school.

[VIEW ON MAP](#)

1 Support This!



What is the title of your idea?

### Skate features in public spaces



Iandon Wheeler suggested this city-wide Facilities, Parks & Recreation idea.

What is your idea, and how does it improve Cambridge?

Integrate deliberately fun to skate features in Public spaces like Malmö and Barcelona do. Integrate skateboarding into public spaces rather than deliberately excluding them.

[VIEW ON MAP](#)

0 Support This!



What is the title of your idea?

### Scatter seating benches throughout the city

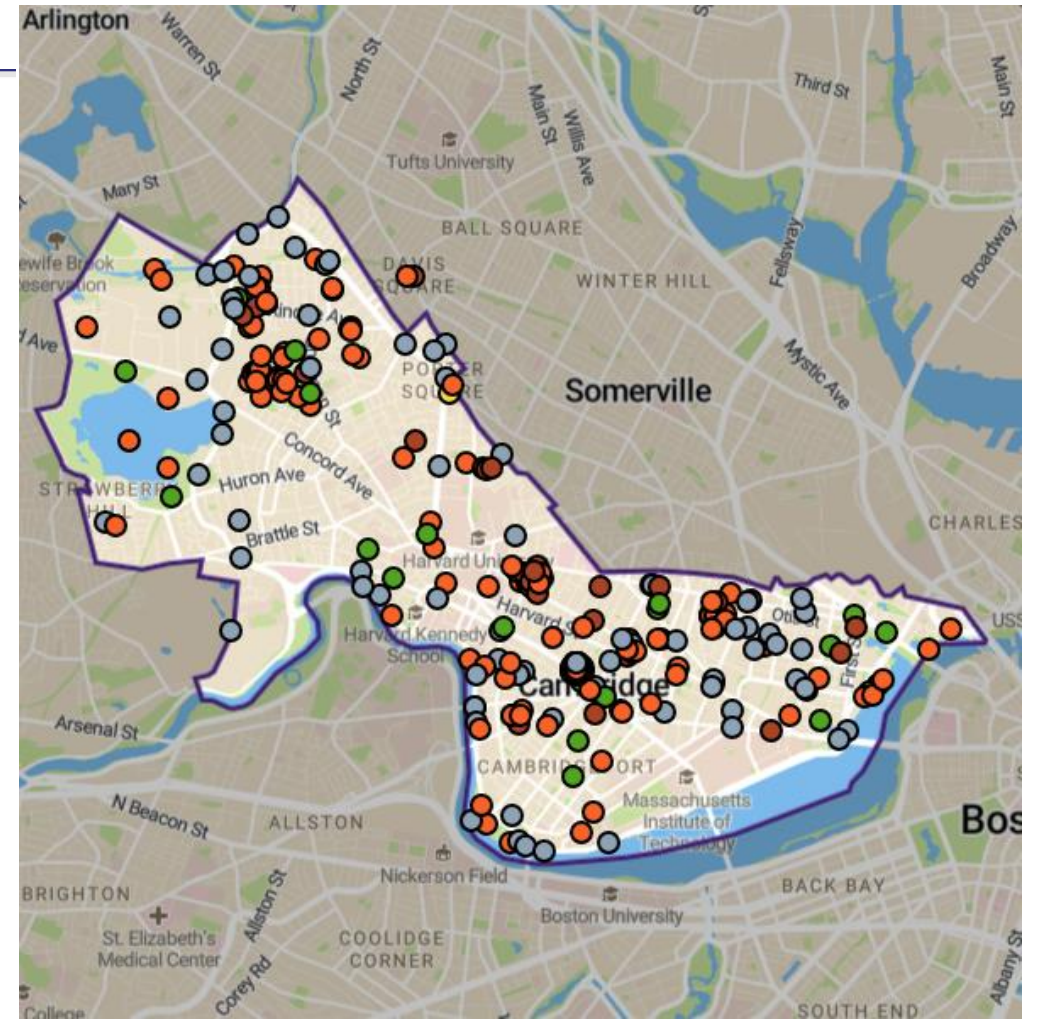


jh suggested this city-wide Transportation, Streets & Sidewalks idea.

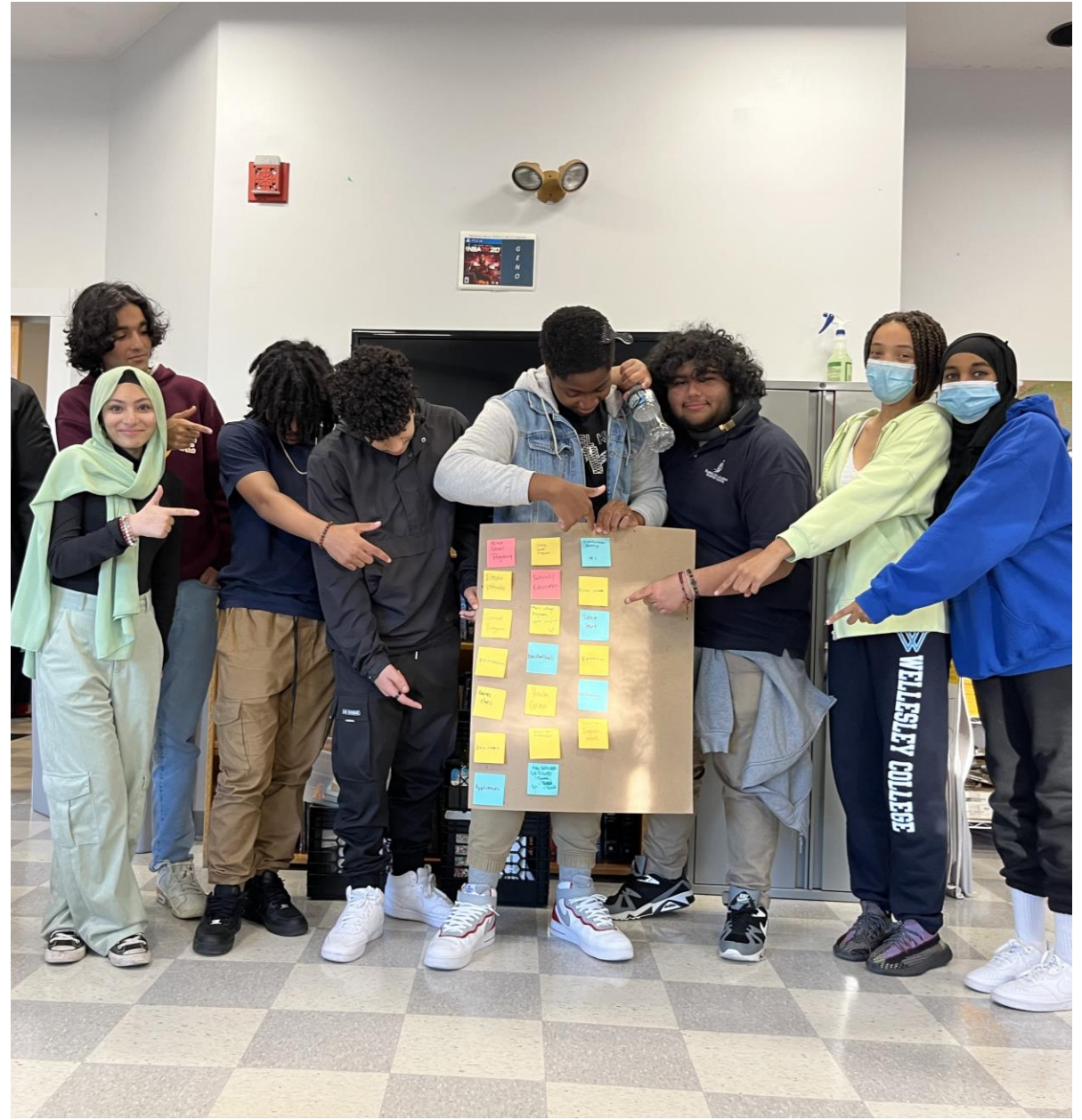
What is your idea, and how does it improve Cambridge?

There are a large number of pedestrian friendly sidewalks in every neighborhood that need occasional benches. Going to or from a major square, where there are some benches, and home or work can be a long walk.

0 Support This!



## Idea Collection



**Proposal Development**





**Voting!**

# Why PB?



- Provide a space for community members to engage and directly contribute to how the city can be improved for them

# Why PB?



- Provide a space for community members to engage and directly contribute to how the city can be improved for them
- Ensure that the budget reflects the public's needs, and inform people on existing initiatives

# Why PB?



- Provide a space for community members to engage and directly contribute to how the city can be improved for them
- Ensure that the budget reflects the public's needs, and inform people on existing initiatives
- Foster civic engagement and community spirit, create community leaders and avenues to work closely with the broader community





Implementation



A circular logo for 'COOL SPOTS'. The text 'Hot summer days need' is written in orange at the top. 'COOL SPOTS' is written in large white letters in the center. 'Where do we need shade?' is written in blue at the bottom. A QR code is located in the bottom right. The logo also includes the 'pb Cambridge' logo and the website 'cambridgema.gov/coolspots'.



# PB Resources

---



- [Cambridge Participatory Budgeting](#)
- [Participatory Budgeting Project](#)
- [Boston Youth Lead the Change](#)
- [Boston Participatory Budgeting: Ideas in Action](#)
- [Somerville Participatory Budgeting](#)



# EEA Office of Environmental Justice and Equity & Meaningful Engagement

## Crystal Johnson

*Assistant Secretary*

*Office of Environmental Justice and Equity  
Executive Office of Energy and Environmental Affairs  
Commonwealth of Massachusetts*



# Climate Adaptation Forum: Community Engagement for Climate Resilience

## What is it and how do you do it well?

---

**Massachusetts Executive Office of Energy and Environmental Affairs  
Office of Environmental Justice and Equity**

**September 27, 2024**



# Goal

---

To inform and inspire regarding community engagement planning, particularly pertaining to environmental justice and equity



# Overview

---

Environmental Justice and Equity

EEA Office of Environmental Justice and Equity

Meaningful Engagement



## Planning Context

---

What is your understanding of environmental justice and equity?



# History of Environmental Justice and Equity

---

Late 1960s/early 1970s, grassroots effort in the United States where minority and underprivileged communities faced disproportionate environmental burdens.

In the 1980s, the environmental justice movement really came into its own.

Today, the environmental justice movement is at the intersection of other movements – environment/climate, public health, workforce, food equity, and more.



# Principles of Environmental Justice

Environmental Justice (EJ) is based on the principle that all people have a **right to be protected from environmental hazards** and to **live in and enjoy a clean and healthful environment**.

EJ is the **equal protection and meaningful involvement** of all people with respect to the development, implementation, and enforcement of environmental laws, regulations, and policies and the equitable distribution of environmental benefits.



# EEA Office of Environmental Justice and Equity

---

- Healey-Driscoll Administration prioritizes Environmental Justice and Equity.
- The Massachusetts EEA Office of Environmental Justice and Equity (OEJE) is committed to **ensuring a fair and equitable distribution of all environmental and energy benefits and burdens**. We work with all agencies under the Secretary to **ensure every policy and program is designed with equity at the center**, ensuring all voices are heard and all voices are shaping the solutions. We are working hard to ensure there is **meaningful engagement in all processes**, resulting in more equitable public policies.
- **EEA EJ Strategy** released in February 2024.





# EEA Office of Environmental Justice and Equity

## *Internal & External Engagement*

---

### **1. Internal Engagement**

- a. EJ Liaisons
- b. EJ Interagency Working Group

### **2. External Engagement**

- a. EJ Council
- b. Justice40 and Equitable Investment Working Group
- c. Other

# EEA Office of Environmental Justice and Equity

## *Effective Communication Tools*

---



Effective public participation is essential

1. Language Access Plan (LAP) - To ensure meaningful access for people with language and other communication needs
2. Public Involvement Plan (PIP) - To enhance transparency in decision-making processes



# Environmental Justice and Equity & Meaningful Engagement

## *Community Engagement Planning Tips*

---

Community engagement should be more than a simple public comment meeting. Project processes should be transparent and accessible, and communities should have input

- Equitable distribution of benefits and burdens
- Value community engagement as a positive opportunity
- Understand that education is an important part of community engagement planning
- Collaborative relationship perspective
- Engage local EJ CBOs prior to an ask
- Design impactful engagement plan/practices to build a new approach to cultivating community relations – Foster/Earn Trust
- Develop an impactful community engagement team
- Municipalities and industry leaders should ensure that environmental justice communities have input through mechanisms such as advisory boards or working groups



# Thank You!

---

Crystal Johnson

Assistant Secretary of Environmental Justice

Massachusetts Executive Office of Energy and Environmental Affairs'  
Office of Environmental Justice and Equity

[crystal.a.johnson@mass.gov](mailto:crystal.a.johnson@mass.gov)

# Community Safety and Climate Resiliency

## Vicente S. Harrison

*Health, Safety, and Emergency Manager  
Vibrant Communities Support Services  
Parks & Recreation, City of Portland*



**PORTLAND PARKS & RECREATION**<sup>SM</sup>

Healthy Parks, Healthy Portland



# Climate Adaptation Forum – Community Engagement for Climate Resilience



**VIBRANT COMMUNITIES**

**Safety / Safety & Park Ranger Program**



## Who We Are: Safety, Security, and Emergency Professionals

- Team of Safety professionals dedicated to health and safety in community and the workplace.
- Our team includes the Park Ranger program, providing park and **community safety** services.
- We work to prevent illness and injury in partnership with internal and external leadership and service organizations.
- Our team is available 7-days a week, nearly 24 hours a day.





## Park Safety Services: Park Rangers

- **Public safety ambassadors** providing **education and positive engagement** in parks.
- Rangers work to ensure equal access to over **12,000 acres** of parks, natural areas, and community centers.
- Portland Park Rangers interpretive model is Leave No Trace Urban Park Principles with emphasis on **environmental education**.
- Portland Park Rangers are leaders in referrals for the **unhoused** to social service resources.







## Engagement: Climate emergency coordination

- **#1 Compassion** - To **recognize the suffering of others** and then **take action to help**. Compassion embodies a tangible expression of love for those **“who”** are suffering.





# What we Do: *Encounters with the unsheltered*

People experiencing homelessness face unfair stereotypes and stigma that don't reflect their reality.

## Don't Assume

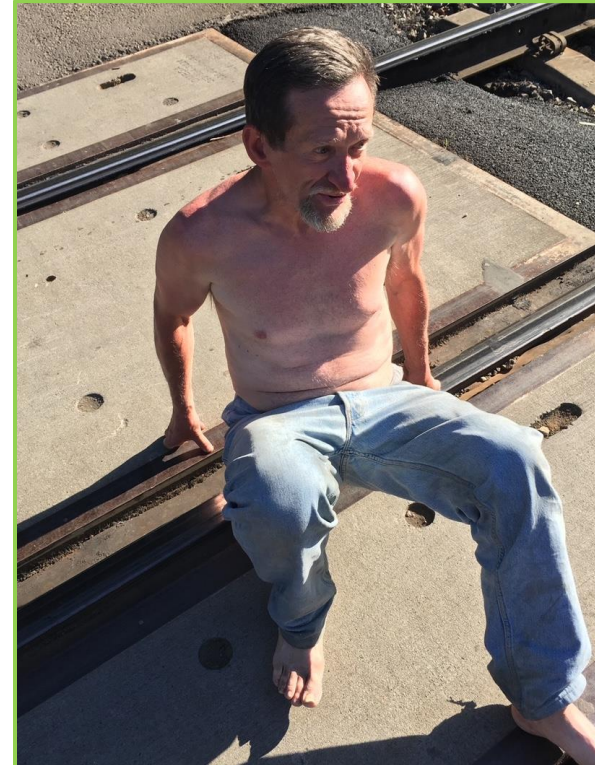
- **Have a safe place to go:**  
No one chooses to live without shelter unless they feel it's their safest option.
- **Is dangerous:** people experiencing homelessness are more likely to be victims of violence than to perpetuate it.
- **Is intoxicated:** behavior identified as intoxication could be a symptom of a physical or mental health crisis.





## What we Do: *encountering the unsheltered*

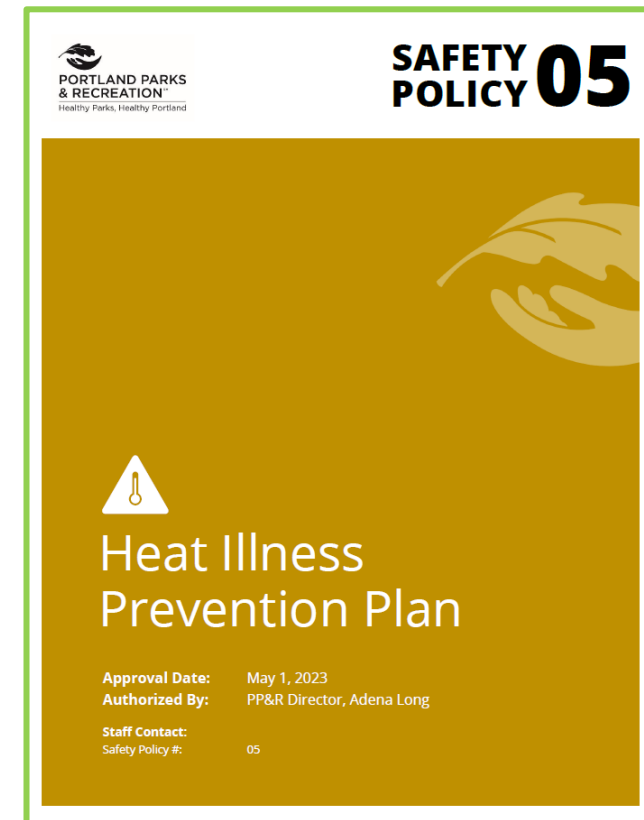
- **Greet them as a person:** Ask how you can assist. Avoid commitments that cannot be kept.
- **Have supplies available:** non-perishable food, water, PPE, or toiletries if acceptable.
- If a person is in an **emergency or danger** due to a medical or safety crisis, call 911 to activate an emergency response.





# Climate Change Safety: Heat event protocols

- **Plan for success:** Stock and have outreach resources availability ice water, electrolytes, cooling towels.
- Coordination with other **community partners**, as necessary.
- Set coordination calls and report out on safety, security or logistics concerns. Identify the needs of **vulnerable populations**.
- Consider **cooling shelter** activation.
- Enhance **water assets** capacity (Misting stations, splash pads and fountains) remain accessible.





## **Opportunity:** Resiliency support following difficult events.

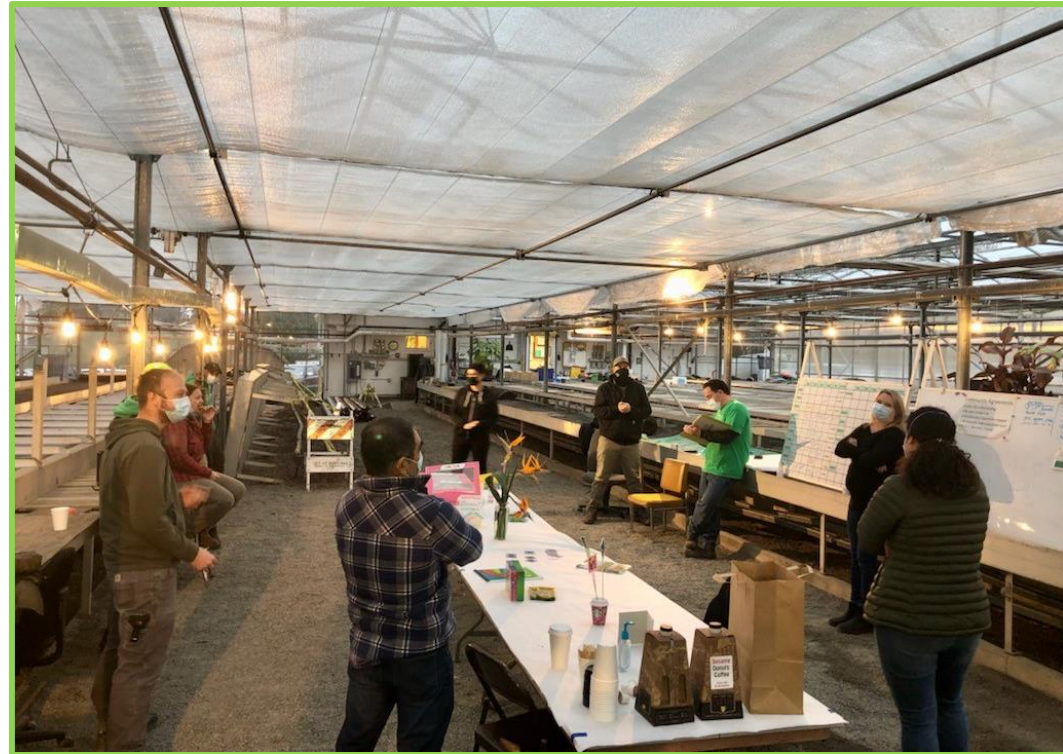
- Stressful events are becoming more common, and staff can feel **burnt out, bitter, and helpless.**
- Moving forward: **resiliency is key** – the capacity to withstand or recover quickly from difficult time.
- Resiliency is a pillar in support other trauma and wellness recovery functions.





## Adapting a Model: "Tea for the Soul"

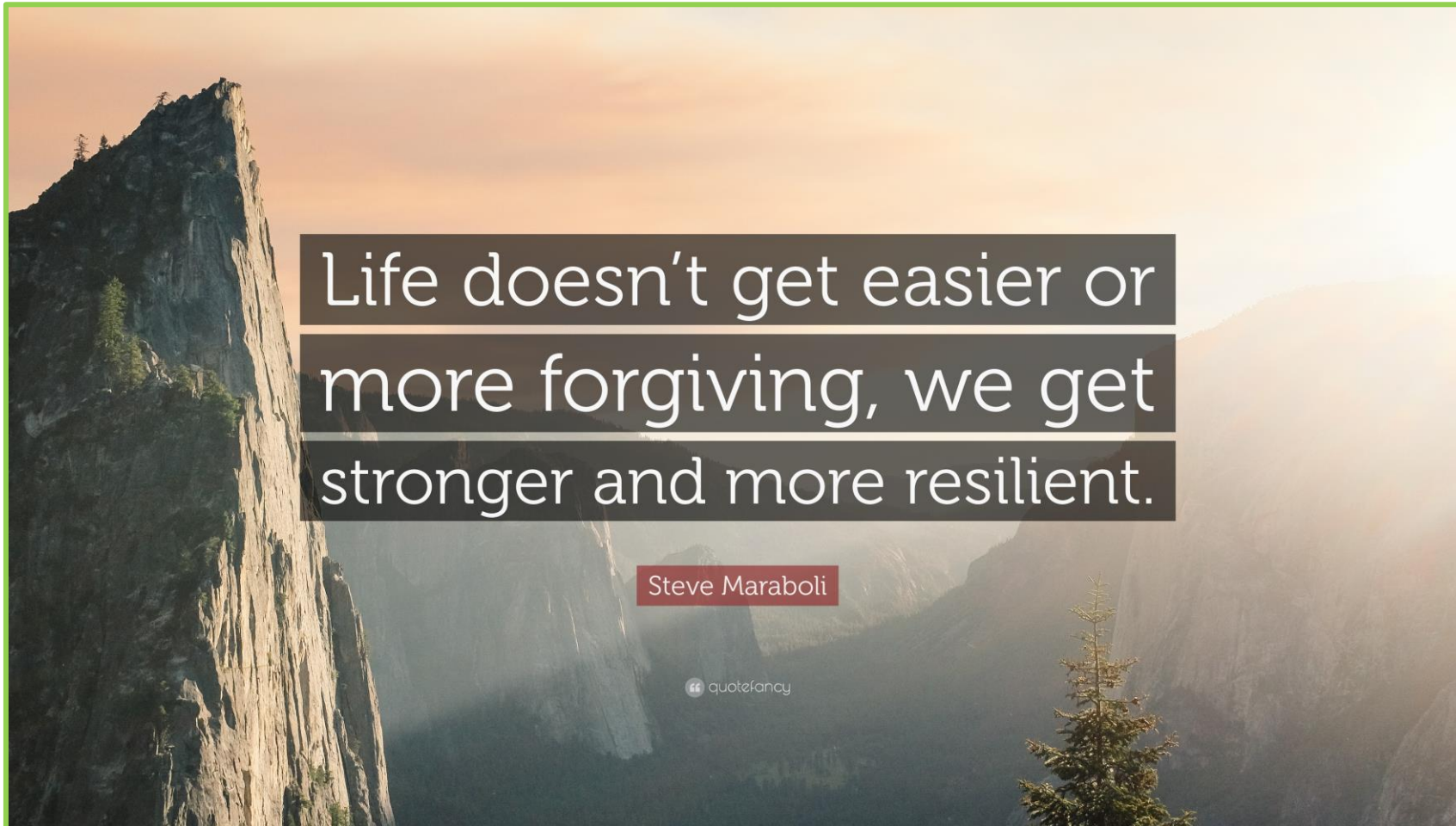
- Originates from the healthcare system.
- Regularly experience hardships that should not transfer to other patients visibly from room to room.
- An outlet to process events based on personal needs.
- A space where everyone can personally reflect a calming space.





## Tea for the Soul at ~Parks

- Critical Incident Stress Debrief –within 24 – 72 hours post-incident.
- A time for staff to meet with support from leadership
- Create a soothing environment, food, stress reduction devices, and certified counseling support
- Confidentiality and building trust – grant space for private staff discussion





# Interactive Facilitated Negotiations Exercise

**Carri Hulet**

*Principal  
CH Consulting*

# NEGOTIATION EXERCISE - REDSTONE



- City of Redstone, population 30,000
- Angela Redstone, developer. Wants to build luxury condos.
- John Hammond, head of residents association. Concerned about gentrification, taxes, change to community character.
- Today's meeting: negotiate a deal for total # of units and percentage affordable.
- City Council and Redevelopment Authority are at odds, but will likely support whatever Angela and John agree to.

- 1) Read general instructions
- 2) Pair up - randomly assigned
- 3) Read confidential instructions for your role
- 4) Negotiate
- 5) Debrief

READ GENERAL INSTRUCTIONS  
~ 8 minutes

## PAIR UP

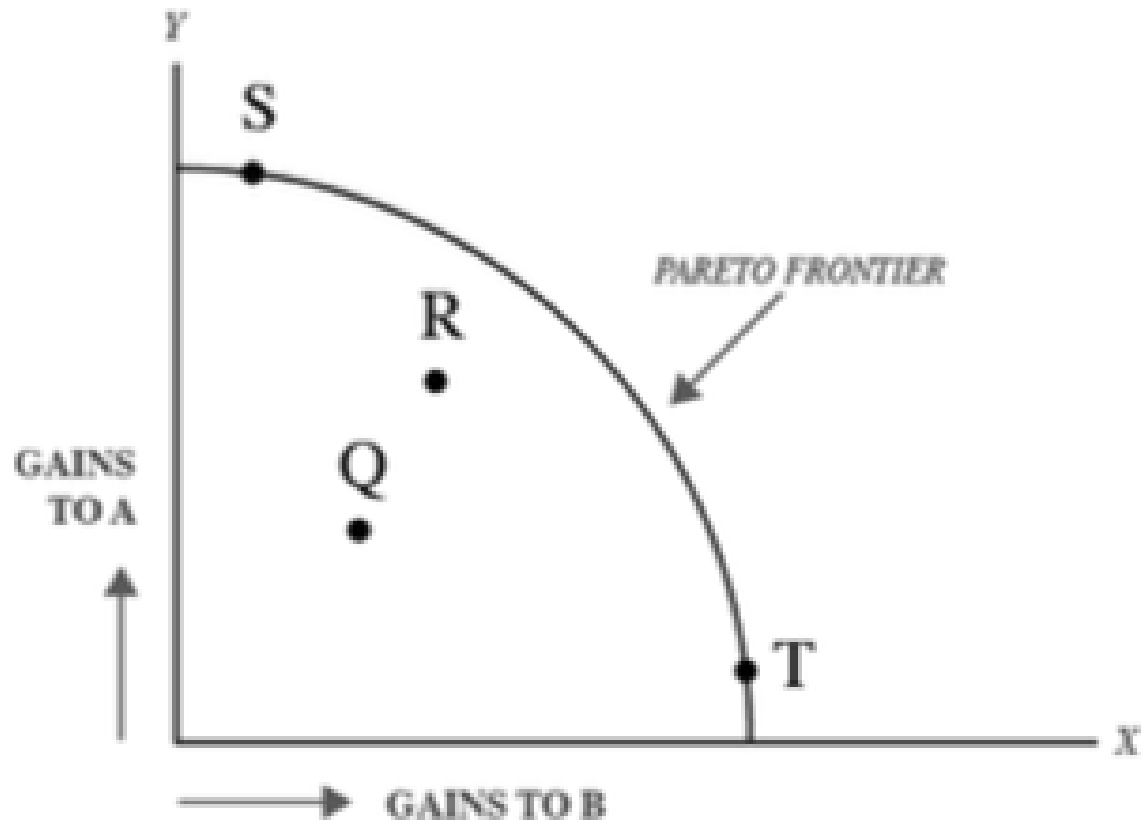
- **In the room:** Find someone you don't know and come get your role from Carri or Jessamyn
- **Online:** Jackson has assigned you to a breakout room. See instructions in the chat.

*Compare birth month and day with you negotiation partner.  
The closest person to January 1 is Angela*

→ Read CONFIDENTIAL instructions for YOUR role (~8 minutes)

→ When you're ready...  
Negotiate and try to come to a deal (~15 minutes)

- **Scoring:** an efficient way to measure success and establish your “no deal” options
  - → Don’t get overwhelmed. Use to your advantage.
- Do not share confidential instructions. **Be strategic** about what you choose to share verbally



## Pareto Efficiency

An economic concept and useful framework for thinking about trading across interests



# CLOSING REMARKS

## Carolyn Norkiewicz

*Forum Co-Chair*

*Regional Coordinator for Greater Boston  
Municipal Vulnerability Program  
Executive Office of Energy and Environmental Affairs  
Commonwealth of Massachusetts*

# SAVE THE DATE!

## Finance Redux

*A topical discussion of federal funding opportunities, funding strategies, the impact of different funding sources – and more!*

## December 6, 2024